



PROTEA

Surveying Instruments cc

FUJIYAMA V30 GPS

Supports PCC Radio
with Trimble & Leica

Compatible with your
current GPS systems

* Special configuration required



FUJIYAMA



1. SIGNAL CHANNELS

- GPS: L1 C/A, L2E, L2C, L5
- GLNASS: L1 C/A, L1P, L2C/A (only for GLONASS M) and L2P
- GALOLEO: (reservation for upgrade)
- SBAS: WAAS, MSAS, EGNOS

2. MODULE TECHNOLOGY

- Trimble Maxwell 6 of advanced user - defined GNSS technology.
- Very low noise GNSS carrier phasein surveying, accuracy <1 mm within 1 Hz wide band, low elevation-angle tracking technology.

1. Receiver Component

- PAC technology
- VISION related technology
- Fast recapture
- Output refresh rate 5Hz (Customised Maximum of 20Hz)
- Superb long-distance RTK solution capability

2. Internal UHF Radio Component

- Frequency bands: 445-447MHz, meeting different requirements, now available with PCC Radio
- 19.2k bps wireless data rate
- 16 flexible switching channels (direct-switched of panel buttons without controller or computer), users can alter the frequency table
- External radio - standard supplied
- Working range up to 15km

- 5 or 25 Watt settings
- External Antenna to reach 7 meters in height

3. GSM Module

- GPRS Trig.Net network communication service
- Worldwide applicable, network automatically login

4. Port Component

- Two RS-232 serial ports (Port 1, Port 2,) Port 1 (big 5-pin port): Baud Rates up to 115,200 bps Port 2 (small 5-pin port): Baud Rates up to 115.200 bps.
- One USB port supporting data download
- One Bluetooth wireless communications port
- Two external DC ports
- One GSM SIM card compartment
- Two internal lithium battery compartments
- One UHF antenna mount

5. Panel Key-Press and LED Display

- 3 panel key-presses, 1 power key-press, 1 function key-press, the flexible combination of two keys varies setting on receiver, with sound and light indication.
- Setting receiver working model
- Setting data link
- Setting radio channel
- Setting base station automatically (without controller)
- Lamp direct: electricity, satellite lock status, data link signal and data flow

Positioning Specifications/Accuracy

Positioning	Horizontal Accuracy (RMS)	Vertical Accuracy (RMS)
RTK	± 1 cm + 1ppm (x baseline length)	± 2cm + 1ppm (x baseline length)
Static/ Fast Static	± 2.5 mm + 1ppm (x baseline length)	± 5 mm + 1ppm (x baseline length)
Single Positioning	1.5m (CEP)	
RTD (Code-differential)	.045m (CEP)	

Physical Specifications

Feature	Specifications
Storage	ARM9 core control chip, built-in 64M Flash memory card
Size	Ø19cm x 10cm
Weight (1 battery inserted)	0.9kg
Anti-Drop	2m natural drop
Battery System	Internal single compartment Lithium battery system, Ensure continuous power supply without interruption
Battery life (at 20 °C)	Each battery capability 1400m Ah, voltage: 7.6V Dual battery continuous working up to 10 hours
Power Input	External DC acceptable, 7.36 V DC, Auto switch between internal and external battery
Main unit power	2W
Operating temperature	- 30 °C - 60 °C
Storage temperature	- 30 °C - 60 °C
Chasing	Water-proof, dust-proof, shock-and vibration-resistant, IP67 grade



Industry-Level Integrated Mainframe

- Industry-level design with water proof glue rubber and mat, waterproof, dustproof and shock-resistant.
- Integrated complete built-in industry-level receiver unit, solid and compact.
- Built-in reliable wireless bluetooth device, eliminate the tradition of cables & back packs.



Control Panel

- Unique control panel design with 2 keys and 3 LED indicators, plus intelligent voice navigation.



Card Slot & Built-In Dual Lithium Battery

- Embedded GPRS communication module, easily operated.
- Built-in dual Lithium battery, ensure switching power without interrupting your surveying work.
- Large battery capacity for 10 hours continuous work.



Carrying Case

- Solid & durable, light weight, portable & striking colour fit field work.



USB Communication Port

- 64M large capacity of FLASH memory meets the need of 120 hours continuous static data collecting.
- USB communication port, plug and play: USB device static data download make you experience the joy of high speed download.

Professional UHF Data Link

- To use the professional UHF datalink, you just need to select UHF data link model.



Industry Level Controller

- CARLSON industry-level colourful touch-screen controller, built-in bluetooth wireless communication with GPS receiver.
- 'Operation in English' version by professional RTK controller software, allows you to experience easy job to field.



Controller Bracket & Carbon Fibre Pole

- Professional controller bracket support fixing angle at any direction, convenient for rotation, equipped with professional compass to improve efficiency.
- 2M carbon fiber GPS pole, portable and durable with precise level bubble, allows you to control your operation easily.

Carlson SurvCE 2

Fully integrated with
model maker, Road maker,
civil design & Auto CAD
programmes

Volumes

SurvCE 2 can compute volumes between two surfaces, one surface and an elevation or simple stockpile volumes. Surfaces can be defined by graphical entities and points or by Carlson TIN files.

GPS Networks

SurvCE 2 supports several GPS network protocols, such as NTRIP, TCP and UDP.

Localization

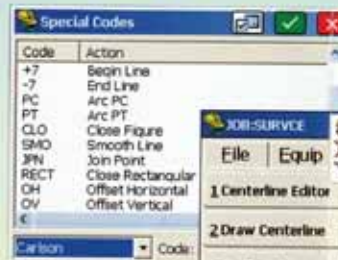
The software supports an unlimited number of localization points. All project scale setting and coordinate system options have been centrally located in the localization dialog.

Feature Coding

- SurvCE 2 can collect parallel lines using the offset horizontal and offset vertical line drawing commands and close a rectangle by three points using the rectangle command. In the settings section of Special Codes, the user can even auto compute and store the additional points at the line vertices that were created by the software.

- SurvCE 2 allows the user to code in numerous coding styles that may be defined by their office package.

Feature Coding - Add numerous coding styles & Functions

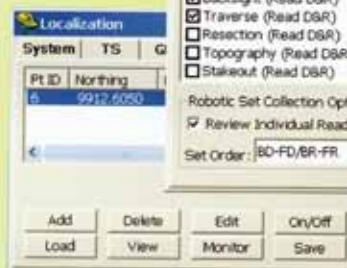


Instrument Switching -
SurvCE keeps track of every
instrument, so switching
equipment is fast and easy.



Tab-Based MENU
Structure - All commands
are visible in each menu

Supports an unlimited
number of localization
points



Angle Sets in Store
Points - Faster, more
efficient collection.



Carlson SurvCE 2 supports
all major manufacturers'
conventional and robotic
total stations and RTK
GPS systems.

CONTACT DETAILS

SALES CONSULTANTS

SOUTH AFRICA

PETRUS (JHB) TEL: 083 265 7272
EMAIL: sales@protsurv.co.za

ANTON TEL: 071 355 3116
EMAIL: anton@protsurv.co.za

GERHARDT TEL: 071 355 3127
EMAIL: gerhardt@protsurv.co.za

HENRI TEL: 0119762070
EMAIL: henri@protsurv.co.za

DC- (SALES MANAGER)
TEL: 082 417 3387
EMAIL: dc@protsurv.co.za

BOTSWANA

PO BOX 20483
BONLENG
BABARONE
BOTSWANA

TEL: (267) 312-1146
FAX: (267) 312-1406

PLOT 170 UNIT 4
COMMERCE PARK
GABARONE
BOTSWANA

CELL: (267) 72 23 5690
EMAIL: protsurv@botsnet.bw

Tel: 011 976 2070

www.protsurv.co.za

Fax: 011 976 3733